

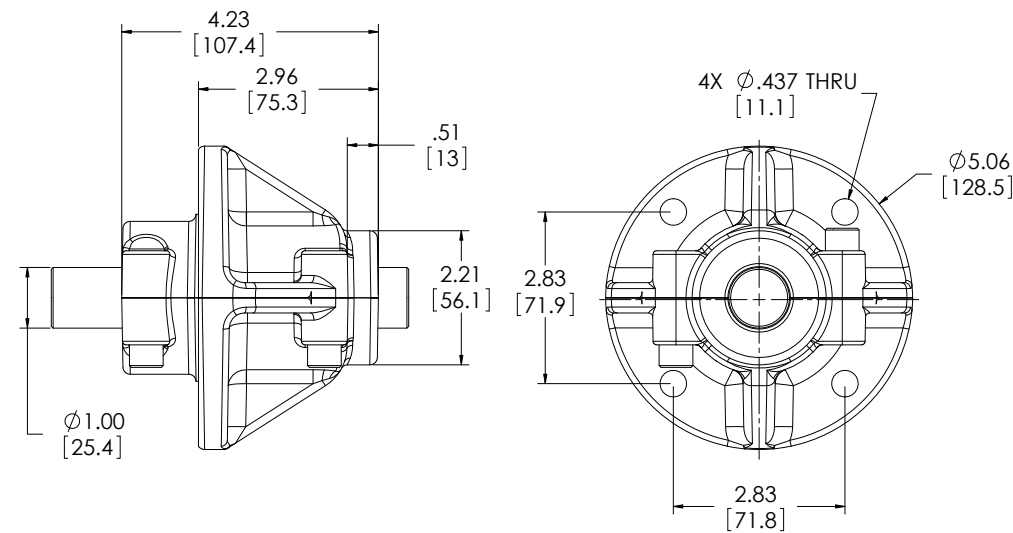


Spindle 240 Series

Applications include various mower decks.

Features:

- Two-piece aluminum housing for high strength, corrosion resistance and thermal capacity
- Die cast, fully machined case halves capture and protect bearings and double lip seals
- Tapered roller bearings provide increased load capacity and bearing life
- 1" shaft made of high strength steel standard
- The 240 series spindle weighs approximately 4.5 pounds, depending upon shaft and adapter configuration
- All Superior spindles are available with a variety of anti-warp devices to increase durability in mower applications
- The 240 is recommended for medium duty use where its low profile and short blade-to-deck dimension is needed



Contact Superior Gearbox for your special requirements.